



# Graduate School of Library, Information and Media Studies

2019



[www.slis.tsukuba.ac.jp](http://www.slis.tsukuba.ac.jp)





## Contents

<a href="#">Greetings from the Dean</a>	<a href="#">1</a>
<a href="#">The Graduate School of Library, Information and Media Studies at glance</a>	<a href="#">2</a>
<a href="#">From Admission to Graduation</a>	<a href="#">4</a>
<a href="#">Faculty of Library, Information and Media Science</a>	<a href="#">8</a>
<a href="#">International Activities</a>	<a href="#">10</a>

## Greetings from the Dean

Since the "Industry 4.0" was advocated at the Hannover Messe 2011, various countries have proposed national strategies which are conscious of the Fourth Industrial Revolution. The Japanese Cabinet approved the "Future Investment Strategy 2017", proposing that the innovations of the Fourth Industrial Revolution based on IoT, Big Data, Artificial Intelligence should be incorporated into industries and our social lives, in order to realize the "Society 5.0" (Super Smart Society) ahead of the world. Furthermore, in such a society, one should acquire value as a professional and possess the "career ownership" to constantly update and improve their own skills for continuous re-designing of the career.

The Graduate School of Library, Information and Media Studies, the University of Tsukuba is a graduate school that explores knowledge and information. Our faculty members are engaged in the research and education related to the circulation of knowledge resources and creation and sharing of new knowledge, in order to support human activities and social development based on knowledge and information. The Super Smart Society is not a simple technology transformation, but it also affects the social structure and people's way of thinking. The diverse research fields of the faculty members of the Graduate School of Library, Information and Media Studies provide the core to realize such the society. The research constitutes the base of the education at our graduate school, and the graduates will possess high value of the professionals which is required in the Super Smart Society.

We welcome anyone aspiring to contribute as a professional for the construction of the new society. Of course, people intending to update their skills to the latest and the top of the field, and those who aiming to re-design their careers, are also welcome to the Graduate School of Library, Information and Media Studies.

Professor Shin-ichi Nakayama  
Dean

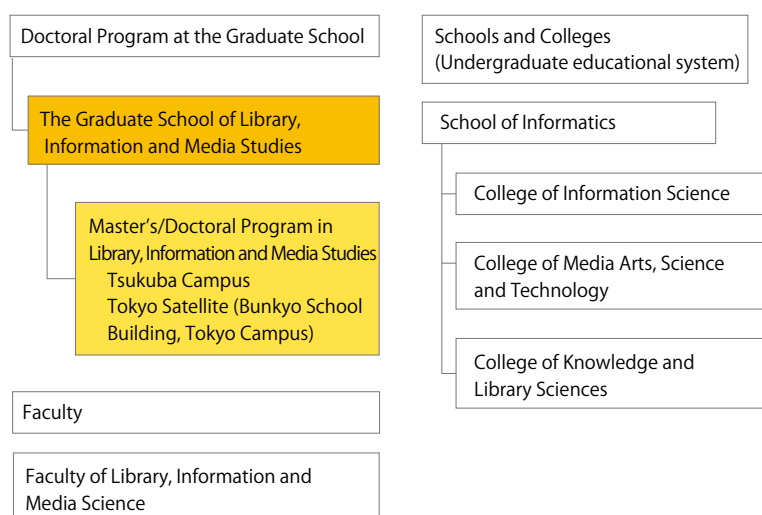
Graduate School of Library, Information and Media Studies

# The Graduate School of Library, Information and Media Studies at glance

## What is the Graduate School of Library, Information and Media Studies?

The Graduate School of Library, Information and Media Studies hosts one of the seven Doctoral Programs provided by the University of Tsukuba. We adopt a two-stage doctoral degree program system that consists of Master's and Doctoral programs.

We are closely linked to the Faculty of Library, Information and Media Science. Courses are taught and students are supervised by the member of the Faculty. Our corresponding undergraduate schools are the College of Knowledge and Library Sciences and the College of Media, Arts Science and Technology, and both are part of the School of Informatics.



## Human Resource Development

The Graduate School of Library, Information and Media Studies aims to develop human resources who are eligible to extend their studies on sharing social knowledge by means of information media and to lead society into the new era, as researchers, university teachers, and highly qualified specialists.

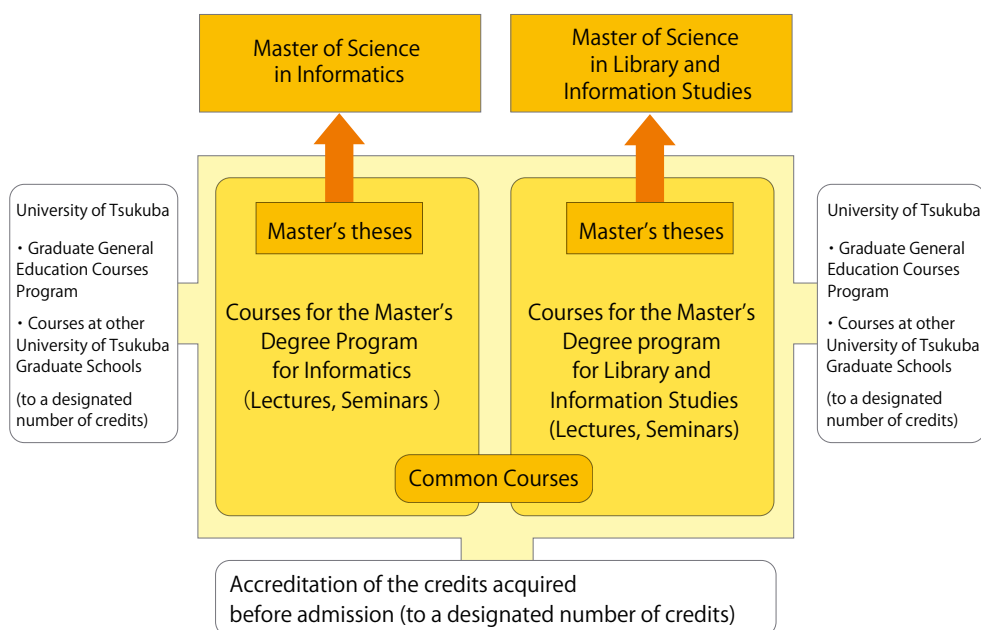
## Prospective Applicants

### Master's Program

Our field of study is comprehensive and interdisciplinary. We accept students who wish to take their places as knowledge and information professionals at the frontiers of the 21st century's knowledge- and information-based society.

### Doctoral Program

We are seeking students who are focused on research themes related to the Library, Information and Media field, and who possess the necessary knowledge and intellect to pursue these themes.



The precursor to the University of Tsukuba's Graduate School of Library, Information and Media Studies was the Graduate School of Information and Media Studies at the University of Library and Information Science (ULIS). ULIS which opened in 1979, has roots in the Ministry of Education's librarian training school, founded in 1921, which developed into the Library College in 1964. In 1984, ULIS started its graduate program that offered a Master's degree in Library and Information Science. In 1999, this master's program was extended to the two-stage program to offer PhD degrees in the Information and Media Studies at ULIS. In October 2002, ULIS was integrated into the University of Tsukuba, and the Graduate School of Library Information and Media Studies was founded to develop this new field of studies.

## Educational Goals

### Master's Program

Our educational goal is to develop individuals who are able to contribute to the information industry and informational services by employing their highly professional expertise, those who have knowledge and creativity that represents a sound balance between theory and practice, those who have perspectives on future trends driving this fast-developing field of information, and those who continue to study in a doctoral program.

### Doctoral Program

This program is for developing researchers who are able to open up the frontiers of the knowledge and information centric society, university teachers who can actively contribute to cultivating human resources promoting cutting-edge research and the evolution of the field, and highly qualified professionals who can play key roles in the global information community.

## Curriculum Policy

### Master's Program

We offer two Master's degrees – Master of Science in Informatics and Master of Science in Library and Information Studies. The curriculum at our school is organized in accordance with these degrees, i.e., degree programs. Students can participate in lectures and seminars in each of the degree programs, so that they can obtain knowledge and skills crucial as specialists in the selected area. In the program of Master of Science in Library and Information Studies, we offer two special programs – LIS

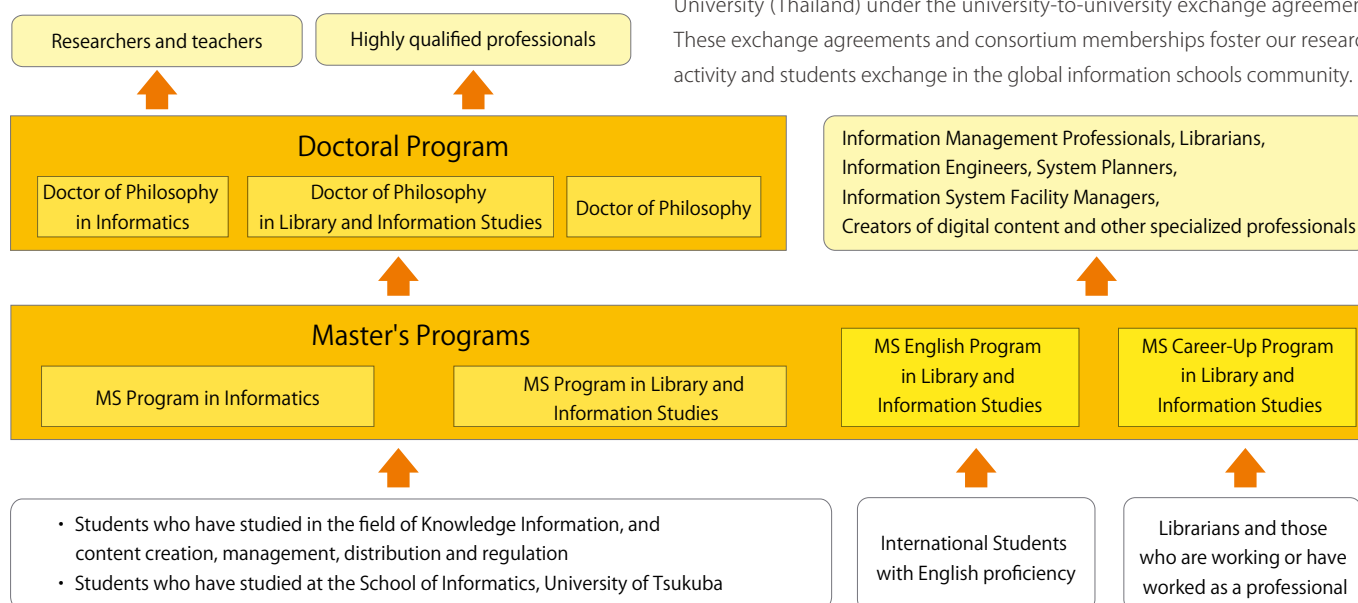
Career-Up Program (CUP) and LIS English Program. CUP is designed for students with job experiences and/or full time positions as librarians and information professionals who would like to enrich their careers. All classes of CUP are offered at the Tokyo campus. English Program is designed for international students who want to learn in English.

### Doctoral Program

The research-oriented curriculum of this program aims to confer on students the competences to develop their research interests, perceive the nature of facts, create novel ideas, and obtain global perspectives. Each student studies under a main academic advisor and two sub academic advisors.

## Overseas Research & Education Opportunities

The Graduate School of Library, Information and Media Studies is widely recognized as a leading information school and has a strong network in the global community. This school is a member of the iSchools organization which is a global consortium of research-oriented information schools and a leading member of Asia-Pacific Consortium of Information Schools (CiSAP). We also have academic exchange agreements with seven institutes worldwide: School of Information at University of Michigan (USA), School of Computing and Information at University of Pittsburgh (USA), Department of Information Studies, Faculty of Humanities at University of Copenhagen (Denmark), National Library of Vietnam (Vietnam), Shanghai Library (China), and Department of Library, Archive and Information Studies of the Graduate School, College of Social Sciences at Pusan National University (Korea), Stuttgart Media University (Germany), Institute for History and Archives, Faculty of Archival Studies at Russian State University for the Humanities (Russia), Department of Interface Culture, Institute of Media Studies at University of Art and Design Linz (Austria), Faculty of Industrial Design Engineering at Delft University of Technology (Netherlands). Furthermore, we have close relationships with Department of Information Management at Peking University (China), Department of Information and Computer Sciences Program at University of Hawaii (USA), Khon Kaen University (Thailand) under the university-to-university exchange agreement. These exchange agreements and consortium memberships foster our research activity and students exchange in the global information schools community.



# From Admission to Graduation

## Entrance Examination

Entrance examinations for the Master's and Doctoral Programs are conducted as shown below.

Program	Examination Categories	Month	Quota
Master's Program	Recommendation-based Examination for Qualified Students	July	7
	General Entrance Examination	General	August & Jan.-Feb.
		MS Program in Informatics	
		MS Program in Library and Information Studies	
		MS Career Up Program in Library and Information Studies	A few
	Special Screenings for the International Students' Special Program	*	A few
Doctoral Program	Recommendation-based Examination for Qualified Students	July	3
	General Entrance Examination	General	August & Jan.-Feb.
		Special Examination for Applicants with jobs and/or job experiences	
		Screenings for the English Program	A few
		Special Screenings for the International Students' Special Program	A few
		*	A few

\* For the examination month, please refer to the Guidelines for Application or the website of Graduate School of Library, Information and Media Studies.  
<http://www.slis.tsukuba.ac.jp/grad/english/index-e.html>

Non-Japanese applicants who apply for the Doctoral Program are allowed to prepare their documents, including research reports and other items, in English, and to take oral examinations in English.

There is no examination or admission fee for the graduate students of University of Tsukuba who are going to finish their Master's program and continue to the Doctoral program. Details in English on the examination schedule are provided at the URL below.

<http://www.slis.tsukuba.ac.jp/grad/admission/index-e.html>

## Admission Qualifications

We welcome applicants from various research fields who are highly motivated toward study at our graduate programs, regardless of their research field, background, age or nationality. Our graduate school doesn't limit the background of the applicant to Library and Information Science and neighboring areas. We welcome applicants from variety of subject areas who want to study in the inter-disciplinary environment.

Students who have no bachelor or Master's degrees but are recognized as possessing equal or higher scholastic ability than university graduates and scholastic ability comparable to Master's Degree holders are concluded eligible to apply to the Master's and Doctoral programs, respectively. Those who wish to apply in this category are requested to undergo prior qualification screening by the Graduate School. The screening will be done only by documents submitted from the applicants, and no fee will be required.

## Method of Examination

### Master's Program

For the recommendation-based examination of the examination, each applicant has to submit a letter of recommendation from the head of your institution, and a research plan which should be prepared under supervision of a qualified faculty who is your expected academic advisor. These documents and the results of your oral examination will be comprehensively inspected for the overall assessment.

For the general track, submitted documents, English ability assessed using your TOEIC, TOEFL or IELTS score and the results of your oral examination will be carefully inspected for the overall assessment.

### Doctoral Program

A comprehensive assessment will be carried out on the documents submitted and on the results of your oral examination.

### Oral Examination

The oral examinations last about 30 minutes for Master's Program applicants, and about 60 minutes for the Doctoral Program. You will need to give a presentation on your research plan and about what prompted you to apply to the Graduate School. Your presentation needs to be made based on a submitted report about your research. If you are applying for the Master's Program, you should allow seven minutes for your presentation, and about 15 minutes if you are applying for the Doctoral program. The presentation will be followed by an interview.

For the Special Screenings for the MSc English Program for Library and Information Studies, the Doctoral English Program and the Special International Programs, overseas applicants may take their oral examination via Skype or other Internet communication tools.

Doctoral Program applicants need to contact their expected academic advisor prior to submission of application documents to receive advisory on the research topics and plans after admission.

Academic advisors of all Master's Program students will be assigned after admission.

Records on Admission Screenings in 2018 & 2019

			General Applicants		Mature Applicants		English Program		Career-Up program in Library and Information Studies		Total	
			A.	S.A.	A.	S.A.	A.	S.A.	A.	S.A.	A.	S.A.
Master's Program	2018	Recommendation-based Examination	11	9	—	—	—	—	—	—	11	9
		August	33(16)	21(6)	—	—	—	—	1	1	50	28
		February	17(14)	9(2)	—	—	6	3	5	2	42	16
	2019	Recommendation-based Examination	9	7	—	—	—	—	—	—	9	7
		August	40(10)	16(2)	—	—	—	—	7	3	57	21
		February	21(21)	10(7)	—	—	5	2	6	2	53	21
Doctoral Program	2018	August	3	3	0	0	—	—	—	—	3	3
		February	3	3	1	1	3	2	—	—	7	6
	2019	Recommendation-based Examination	2	2	—	—	—	—	—	—	2	2
		August	1(4)	1(3)	1	1	—	—	—	—	6	4
		February	2	2	1	1	5	4	—	—	8	7

(A. = Applicants; S.A. = Successful Applicants)

(Numbers in parentheses are the number of international students)

# Educational Programs

## Master's Program

Curricula are provided for two degrees: Master of Science in Informatics and Master of Science in Library and Information Studies. Students are required to acquire 30 credits or more and to write a Master's thesis.

### MS Program in Informatics / MS Program in Library and Information Studies

Through the programs, students will seek to qualify as information professionals with leadership potential by obtaining practical competences and an extensive knowledge of information sciences. The programs are also planned to prepare future students for the Doctoral program.

### MS English Program in Library and Information Studies

This program is designed to cultivate researchers and professionals who can work internationally in the field of Library and Information Studies in the future. A special focus is placed on acquiring cutting-edge knowledge and skills, taking advantage of Japan's highly advanced information technologies that will assist in the management and provision of information resources.

Lectures and research instructions are conducted entirely in English. This English program's academic year starts in the Fall Semester every September, and lasts for two years.

### MS Career-Up Program in Library and Information Studies

Targeted at active professionals with high expertise in knowledge and information field, the program is designed to facilitate the finding of problems and solutions in their daily operations. The curriculum centers on the general aspects of Library and Information Studies, so students are able to both commence and restudy this field. They will acquire highly advanced knowledge and learn technologies useful for analyzing, modifying, expressing, conveying, providing and utilizing their knowledge and information.

Course List (Master's Programs)

Program Name Course Name	MS Program in Informatics	MS Program in Library and Information Studies	MS English Program in Library and Information Studies	MS Career-Up Program in Library and Information Studies
Lectures	Obtain more than 20 credits. Of these, 12 or more credits must be from the lectures in the MS Program in Informatics.	Obtain more than 20 credits. Of these, 12 or more credits must be from the lectures in the MS Program in Library and Information Studies.	Obtain more than 22 credits. Of these, 12 or more credits must be from "Research Methods in Informatics" and the other lectures in the MS English Program for Library and Information Studies.	Obtain more than 20 credits. Of these, 12 or more credits must be from lectures for the MSc Career-Up Program for Library and Information Studies.
Seminars	Information Media Seminar A (Informatics), Information Media Seminar B, C and Special Seminar (Informatics) a,b	Information Media Seminar A (Library and Information Studies), Information Media Seminar B, C and Special Seminar (Library and Information Studies) a,b	Practical Seminar A Practical Seminar B Synthetic Seminar on MS Research a,b	10 or more credits from Information Presentation, Research Guide, Survey Analysis, Literature Reading I, Literature Reading II and Special Seminar a,b

## Doctoral Program

To obtain Doctor of Philosophy in Informatics, Doctor of Philosophy in Library and Information Studies, or Doctor of Philosophy, students need to obtain four credits from lectures and six credits from practical seminars.

Course List (Doctoral Program)

Course Name	Credits
Lectures	4 credits
Seminars	6 credits
Information Media Special Seminar Ia	
Information Media Special Seminar Ib	
Information Media Special Seminar IIa	
Information Media Special Seminar IIb	
Information Media Special Seminar IIIa	
Information Media Special Seminar IIIb	

## Classes & Credits

Periods	Hours
1st period	8:40 - 9:55
2nd period	10:10 - 11:25
3rd period	12:15 - 13:30
4th period	13:45 - 15:00
5th period	15:15 - 16:30
6th period	16:45 - 18:00
7th period	18:20 - 19:35
8th period	19:45 - 21:00

The University of Tsukuba's academic calendar runs on the semester system: the Spring Semester (April – September) and the Fall Semester (October – March). If you attend one course lasting 75 minutes 10 times, you will obtain 1 credit.

## Graduate School Open Campus

For details, please refer to the following webpage:  
<http://www.slis.tsukuba.ac.jp/grad/english/admission/openampus-e.html>



## Tokyo Satellite

The Career-Up program for Library and Information Studies gives lectures on weekday evenings and weekends. The classroom for the program is available at the Tokyo Satellite (the Bunkyo School Building, Tokyo Campus of the University of Tsukuba).

You will be able to access the same campus network environment at the Tokyo Satellite that is available at the Kasuga Area on the Tsukuba Campus. Through this network, you can access the University of Tsukuba's networked resources including all of the University Library resources online.



▲ University of Tsukuba Bunkyo School Building, Tokyo Campus

## Research Environment

In the Kasuga Area, our graduate school provides individual graduate students with study space with a desk. Acquiring a computer account will allow you to use an e-mail address and give you access to webpage space, extensive computer and other electronic resources.



▲ Research environment

## Conference Participation Support

Financial aids are available to encourage and support graduate school students to give presentations at conferences held both in Japan and abroad. Funding typically covers travel expenses and registration fees to the conferences. More than 60 Graduate School students benefitted from this system in Academic Year 2018.



▲ Presentations at conferences

## TAs, TFs & RAs

At the graduate school, there is a system for providing eligible students opportunities to work and contribute to the University's education and research programs. TAs (Teaching Assistants) attend and assist at undergraduate and Graduate School lectures and seminars. TFs (Teaching Fellows) participate in lectures under the instructions of professors. RAs (Research Assistants) may conduct research in collaboration with professors.

In Academic Year 2018, 64 Master's Program students, and 8 Doctoral Program students were appointed as TAs to assist with undergraduate education, including 1 student appointed as TFs. 9 Doctoral Program students were appointed as RAs.



## Entrance & Tuition Fees Exemption

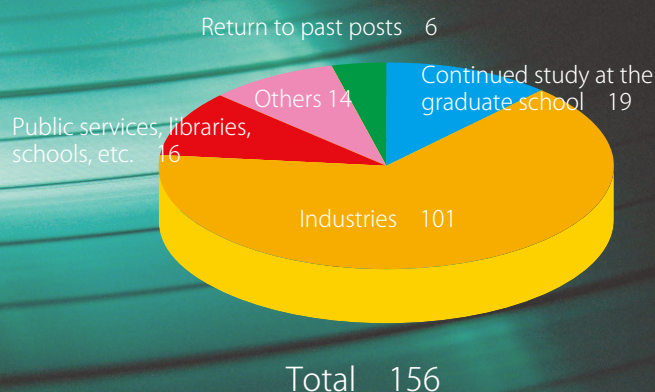
Admission fees in AY2018

Entrance fee JPY 282,000

Tuition fee JPY 535,800

For academically talented students who are suffering financial difficulties, there is Tuition Exemption Program. Students can be approved for receipt of full or half tuition exemption.

## Careers after Program Completion



Career Path AY2015-AY2017 (Master's Program)

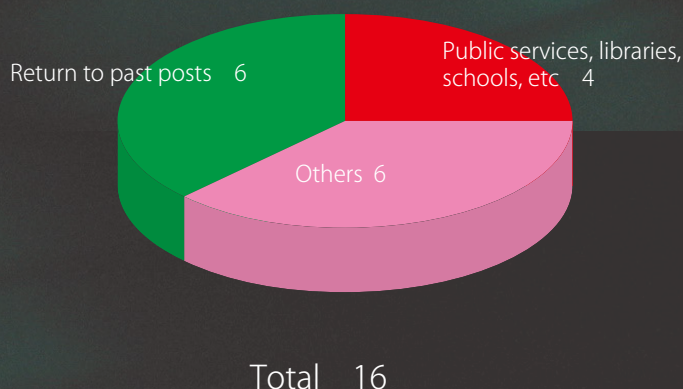
## Scholarships

1) Japanese Government (Monbukagakusho : MEXT) Scholarship

There are several ways in which the Japanese Government (Monbukagakusho : MEXT) scholarships can be applied. Most of them are applied through the Japanese embassies or consulates general in the applicant's home countries.

2) Scholarships or Other

Local governments, international associations and private foundations provide scholarships for outstanding international students. Visit <http://www.tsukuba.ac.jp/en/study-tsukuba/campus-life/scholarships> for more details.



Career Path AY2015-AY2017 (Doctoral Program)

## Honorable Recognition

Master's Program students who write an outstanding Master's thesis, and Doctoral Program students who achieve important research outcomes may receive an Honorable Recognition at the postgraduate commencement ceremony. Students who have received a JASSO Scholarship Loan Type I and achieve noteworthy results that are highly commended by external organizations and are entitled to apply for scholarship repayment exemption.



# Faculty of Library, Information and Media Science

## Information Principles and Design

**GOTO Yoshihiro** (Professor) : Intellectual History of Communication, Socio-Information Studies

**KATO Makoto** (Associate Professor): Information Retrieval, Web Mining, Data Search

**MORISHIMA Atsuyuki** (Professor) : Data Engineering, Databases

**NAKAI Hisashi** (Associate Professor) : Compiler Construction, Programming

**OOSAWA Fumito** (Assistant Professor) : Educational Technology

**SUZUKI Nobutaka** (Associate Professor) : Structured Documents, Database

**TERUYAMA Junko** (Assistant Professor) : Cultural anthropology, medical anthropology

**TOSHIMORI Atsushi** (Chair, College of Knowledge and Library Sciences; Professor) : Behavioral Modeling

**TSUJI Keita** (Associate Professor) : Reference Service, Book Recommendation

**UDA Norihiko** (Associate Professor) : Information Resource Management, Digital Library

**WAKABAYASHI Kei** (Assistant Professor) : Statistical Machine Learning, Dialogue System, Social Media analysis

**YE Shaoyu** (Assistant Professor) : Social Informatics, Media Communication

**YOKOYAMA Mikiko** (Associate Professor) : Philosophy, Knowledge Theory

## Information Circulation

**BARYSHEV, Eduard** (Assistant Professor) : History of International Relations, Comparative Social History, Archival Studies

**IKEUCHI Atsushi** (Associate Professor) : Library and Information Science

**ITSUMURA Hiroshi** (Professor) : Academic Library Management, Scholarly Information Systems, Information Search Behavior

**MIHARA Tetsuya** (Junior Assistant Professor) : Metadata, Digital Archive and Linked Data for Manga and Pop-culture

**NAGAMORI Mitsuharu** (Assistant Professor) : Information Science

**OHBA Ichiro** (Assistant Professor) : Library and Information Science

**SAKAGUCHI Tetsuo** (Associate Professor) : Information Science

**SHIRAI Tetsuya** (Professor) : Local History in Japan, Historical Materials, Archival Science

**TAKAKU Masao** (Associate Professor) : Information Retrieval, Scholarly Communication, Special Library

**YOSHIKANE Fuyuki** (Professor) : Bibliometrics, Informetrics

## Media Innovation

**FUJISAWA Makoto** (Assistant Professor) : Computer Graphics, Physics Simulation

**HASEGAWA Hidehiko** (Professor) : High Performance Computing, Numerical Linear Algebra

**KIM Sangtae** (Associate Professor) : Art & Design, Information Design, VR/AR Content Production

**MATSUBARA Masaki** (Junior Assistant Professor) : Artificial Intelligence, Cognitive Science, Sound and Music Computing, Educational Technology

**MATSUMOTO Makoto** (Professor) : Computational Physics, Computer Simulations

**MIKAWA Masahiko** (Associate Professor) : Robotics, Interface, Robot vision

**MORITSUGU Shuichi** (Professor) : Computer Science

**OCHIAI Yoichi** (Associate Professor) : Real World Oriented Computer Graphics, Human Interface, Media Art

**SHIMAKAGE Keisuke** (Assistant Professor) : Design research, Inclusive design, Speculative design

**TERASAWA Hiroko** (Assistant Professor) : Acoustics, Sound Synthesis, Computer Music, Music Psychology

**TEZUKA Taro** (Associate Professor) : Machine Learning, Signal Processing

**TOKII Maki** (Assistant Professor) : Computational Physics

**TSUJI Yasuaki** (Professor) : Video media, Video archive, Video content distribution over the internet

## Human Information Interaction

**HIRAGA Yuzuru** (Professor) : Cognitive Science, Artificial Intelligence, Music Information Processing

**INOUE Tomoo** (Professor) : Social Computing, HCI, Educational Technology, Knowledge Science

**JOHO Hideo** (Associate Professor) : Information Retrieval, Information Seeking Behavior, Reference Science

**MAESHIRO Tetsuya** (Associate Professor) : Knowledge Structure and Manipulation, Computational Biology

**MATSUBAYASHI Mamiko** (Assistant Professor) : Information Behavior, Media Studies

**MORITA Hiromi** (Associate Professor) : Experimental Psychology, Cognitive Psychology

**NAKAYAMA Shin-ichi** (Dean, Graduate School of Library, Information and Media Studies; Professor) : Applied Informatics

**SANNAMI Chihomi** (Assistant Professor) : Technical Communication, Knowledge and Information Study

**SARCAR Sayan** (Assistant Professor) : HCI, Ageing and Accessibility, User Interface Optimization

**SATOH Tetsuji** (Chair, Master's and Doctoral Programs of Library, Information and Media Studies; Professor) : Information Access, Data Engineering

**SEKI Yohei** (Associate Professor) : Information Access Technologies, Natural language Processing

**SUZUKI Kanae** (Associate Professor) : Social Psychology, Educational Engineering, Social Information

**YU Haitao** (Assistant Professor) : Intelligent Information Science, Library and Information Science, Interactive Information Retrieval

## Information and Society

**DONKAI Saori** (Professor) : Library and Information Science, Library History

**HARA Atsuyuki** (Assistant Professor) : Library and Information Science, Library History

**HIRAKUE Yuji** (Professor) : Library and Information Science, School Library

**KOIZUMI Masanori** (Assistant Professor) : Library Management, Public Governance, Public Sphere

**MATSUMURA Atsushi** (Assistant Professor) : Informatics

**MIZOUE Chieko** (Dean, Faculty of Library, Information and Media Science; Professor): Policy of Higher Education, Cultural Policy

**MURAI Maiko** (Associate Professor) : Intellectual Property Law, Copyright Law

**WATANUKI Toyoaki** (Professor) : Japanese Literature, Japanese Books

**YOSHIDA Yuko** (Professor) : Library and Information Science

# International Activities

## Global Cooperation for Identifying New Trends in Education and Research at Information Schools

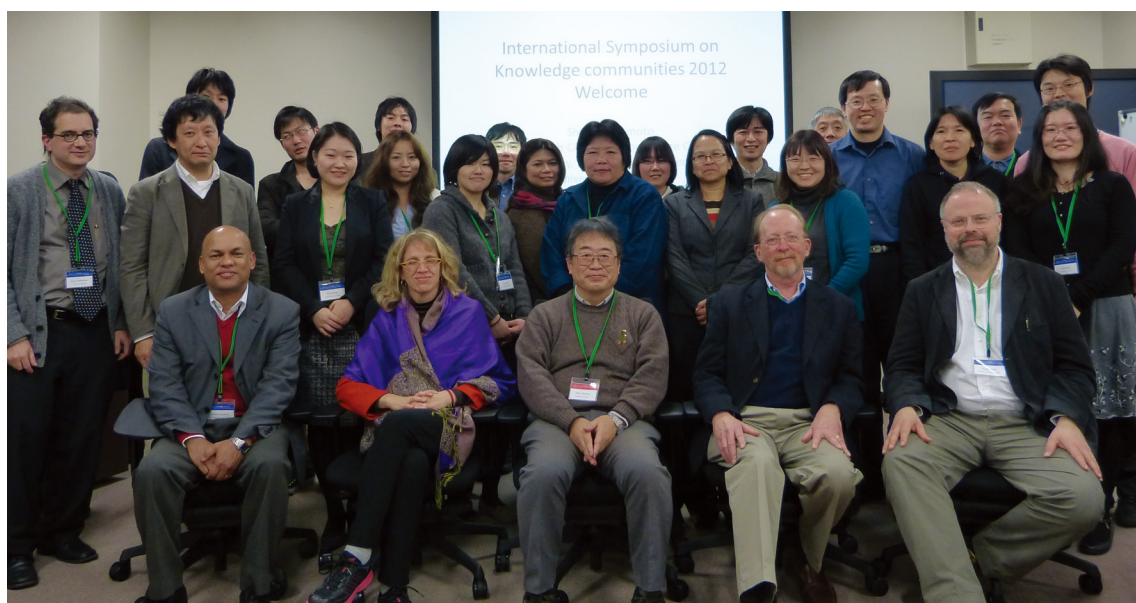
In today's highly networked society, education and research need to keep up with global trends and must be able to transmit information to global communities. Using our long-standing Library and Information Science as a jumping-off point, the Faculty of Library, Information and Media Science and Graduate School of Library, Information and Media Studies have been seeking opportunities internationally to spot new trends in education and research at information schools.

The Faculty of Library, Information and Media Studies has exchange agreements with the University of Pittsburgh's School of Information Sciences, the Royal School of Library and Information Science at University of Copenhagen in Denmark, and other universities and national libraries worldwide. The Pusan National University Department of Library, Archive, and Information Studies in Korea, Renmin University in China and our Faculty of Library, Information and Media Science have co-hosted international conferences annually since 2008. Holding international seminars and hosting overseas researchers and librarians are examples of how the Research Center for Knowledge Committee and the Faculty of Library, Information and Media Science work together proactively to realize international exchanges.

The explosive development of the Internet has brought major changes to the information environment that have impelled leading graduate schools of library and information studies in North America to repurpose themselves as Information Schools to maintain their relevance in an increasingly information-networked world. In contemporary networked information society, it is crucial to connect individu-

als to the community, to a range of knowledge and information resources, and to provide them with comprehensive and integrated knowledge of information technology. The established Library and Information Science schools have developed a rich set of knowledge and skills that link individuals, the community and information resources. The Information Schools are adding new aspects to the traditional knowledge and skills to realize a highly networked society and to connect people and communities by information across boundaries.

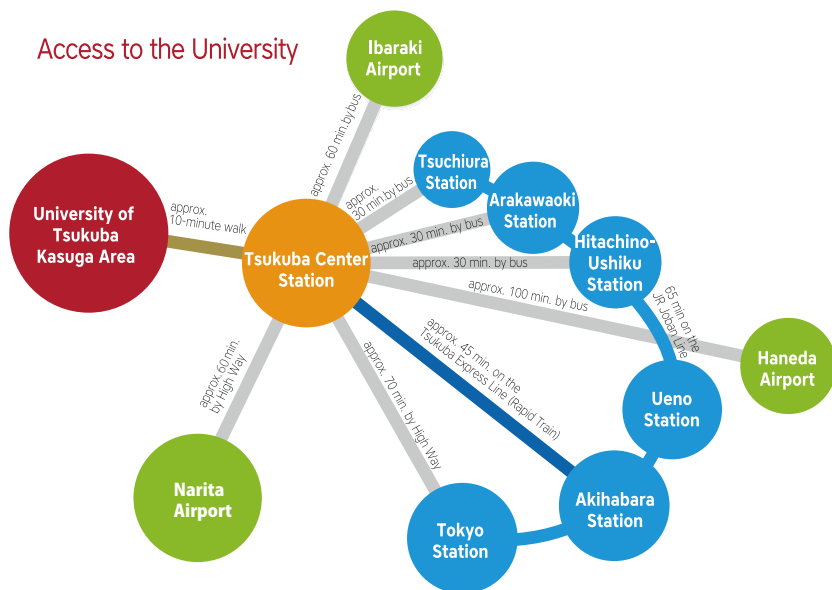
The Faculty of Library, Information and Media Science and Graduate School of Library, Information and Media Studies are always quick to spot the most novel trends in research and education. In 2012, we joined *iSchools*, the international organization of Information Schools: we are the first member from Japan. This international organization, originating in North America, now boasts a federation of more than 60 highly research-oriented member universities. In addition, the Consortium of Information Schools (CISAP) was founded in December 2008. Twenty-four universities from 11 nations are now participants. As a core member since its foundation, the Faculty of Library, Information and Media Science and Graduate School of Library, Information and Media Studies have been working to foster interchanges and is promoting collaborations among member institutions in the Asia Pacific Region.







## Access to the University



## Tsukuba Campus (Kasuga Area)

### Rail

45 minutes from Akihabara Station to Tsukuba Station on the Tsukuba Express rapid train. If you use the JR Joban Line, get off the train at Hitachino-Ushiku Station, Arakawaoki Station or Tsuchiura Station, and take the bus bound for Tsukuba Center or Tsukuba-Daigaku-Chuo. Get off the bus at Tsukuba Center. The journey from these JR stations takes about 30 minutes.

### Highway Bus

Take a highway bus bound for Tsukuba-Daigaku-Tsukuba Center-Yuki from the Highway Bus Station at Tokyo Station's Yaesu South Exit. The journey time to Tsukuba Center is about 70 minutes.

### On Foot

Approx. 10 min. on foot from Tsukuba Station Exit 1 or 2; approx. 10 min. from Tsukuba Center

### By Car

Exit the Joban Highway at the Sakura-Tsuchiura interchange. Drive about 5.2 km north and turn left onto Kita-o-dori. At the second traffic light, turn left. This will bring you to the Kasuga Area of Tsukuba University's Tsukuba Campus.

### Airport Bus

Using the Highway Bus to Tsukuba Center  
From Haneda Airport: approx. 100 min  
From Narita Airport: approx. 60 min  
From Ibaraki Airport: approx. 60 min

## Graduate School's Tokyo Satellite

### Subway

A 2-min. walk from Myogadani Station, on the Tokyo Metro Subway Marunouchi Line, will bring you to the University of Tsukuba's Bunkyo School Building, Tokyo Campus.

